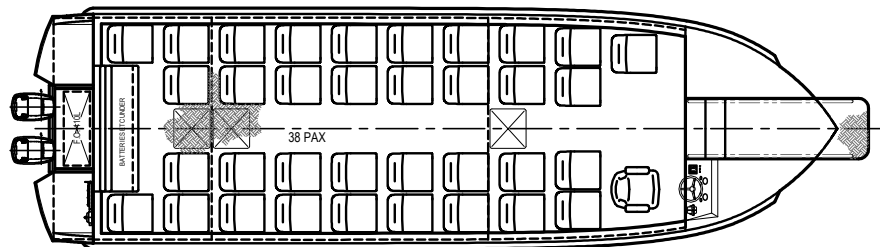
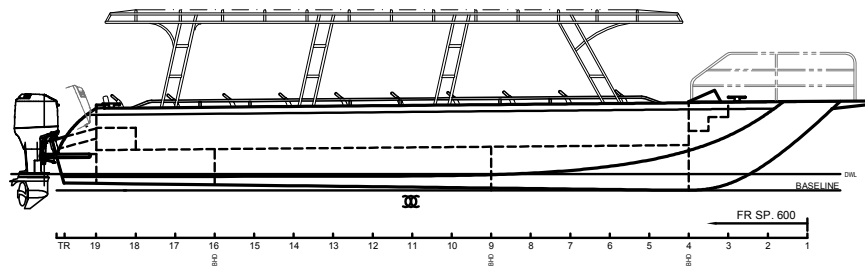


bruyn design
marine design consultants



12-86 12m Eco-Tour Vessel

The design is a v-nose work boat hull with wide waterline beam for maximum stability and passenger comfort. The low dearise also contributes to stability with the shallow draft allowing access to difficult tour areas. Propulsion is by twin 115hp 4-stroke outboards.

The vessel is designed to the Australian USL Code with the structure designed to Australian Standard AS4132.2-1993.

PARTICULARS

Length Overall (HULL):	11.9 m
LWL:	10.6m
Beam :	3.55m
Design Draft:	.25m (Lightship), .35m (Full Load)
Fuel Oil:	110L
Survey:	USL 1E 32 passengers+2 crew