

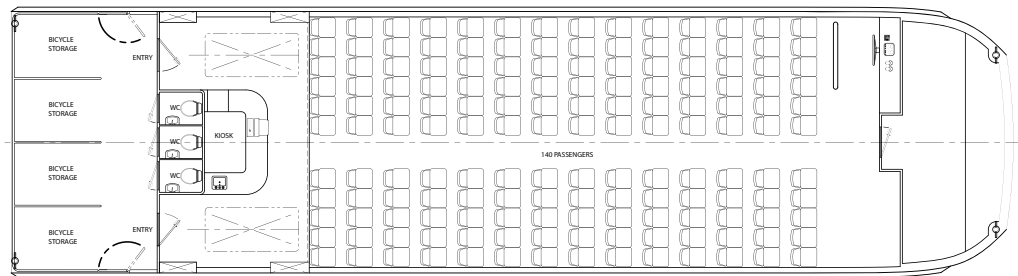
### 03-P69 23m Low Wash Cat River Ferry

This vessel is a modern catamaran aluminium ferry designed for river passenger service. It provides operators with an efficient, economical and durable vessel with a high level of comfort for both passengers and crew.

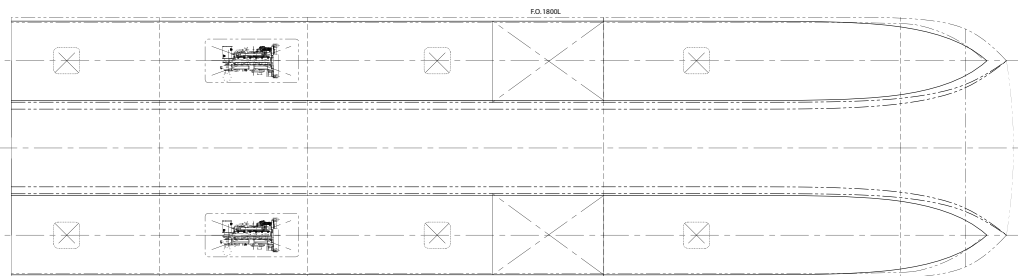
The low wake hullform contributes to the low fuel consumption and satisfies statutory authorities. The styling is modern and streamlined yet simple with a practical efficient interior layout, providing an economical building cost.



PROFILE



MAIN DECK



BELOW DECK

#### PARTICULARS

Length Overall:	22.95 m
LWL:	22.0m
Beam (Max):	6.0 m
Draft:	1.1 m
Fuel Capacity:	3600 litres (Nom)
Complement:	140 Pax, 3 Crew
Propulsion:	Cummins 6CTA8.3 (350Bhp@2500rpm) MG5114A(2.033:1)
Survey/Class:	USL1E or to class of IACS member Society